



Actual exterior may change depending on specific building location

\lah-gome\ Swedish: Something done in just the right amount; in comfortable moderation and balance

# LAGOM N-1c

+3 bed | 2.5 bath |  
2,286 sqft

+ Modern floor plan with two living areas plus flex space

+ Contemporary kitchen with generous cabinets and large island

+ Covered outdoor patio

+ Mudroom and 1/2 bath off of garage entry



FRONT ELEVATION

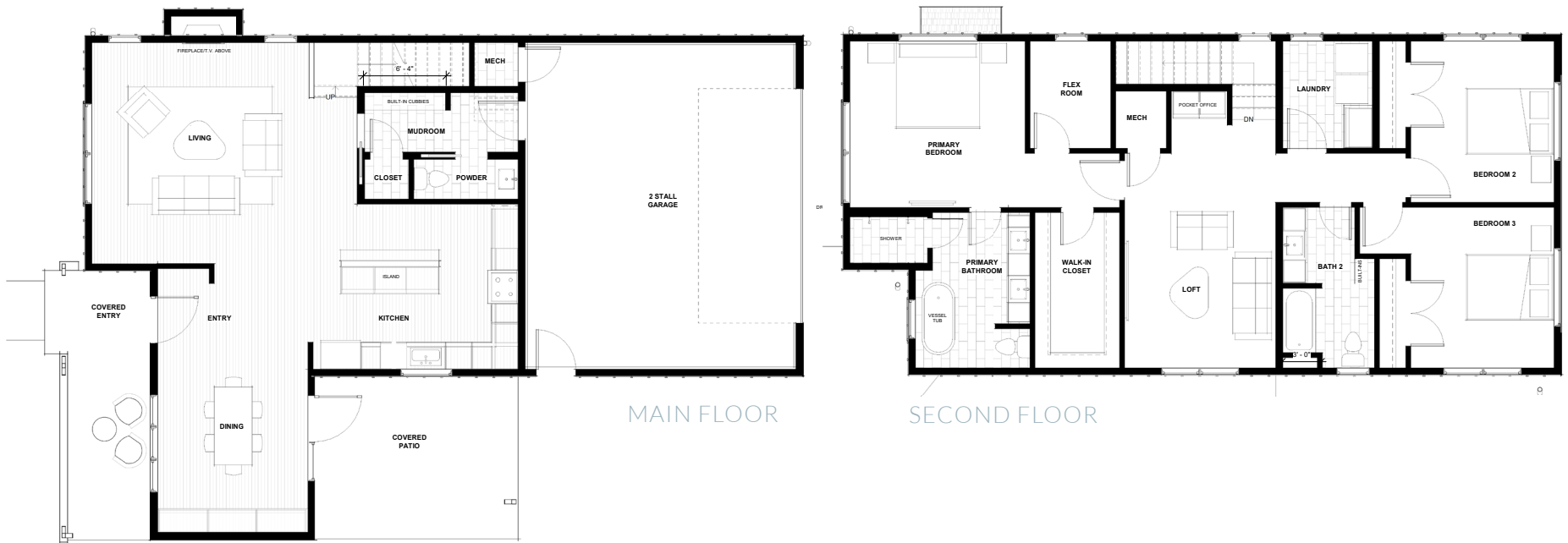


SIDE ELEVATION

[GranCieloBZN.com](https://www.GranCieloBZN.com)



GRAN CIELO



## LAGOM N-1c

2,286 GSF | 3 bedrooms | 2.5 bathrooms

Please note actual floor plans and finishes may differ slightly when constructed.