



Actual exterior may change depending on specific building location

\fee-kah\ Swedish: Making time for friends and colleagues to share a cup of coffee (or tea) and a little something to eat.

FIKA 2A

- + Efficient open living plan
- + Modern Scandinavian design with quality materials throughout
- + 3 bed, 2.5 bath plan
- + Additional features include a mudroom and 2nd floor flex space
- + Private ADU/guest quarter above garage



FRONT ELEVATION

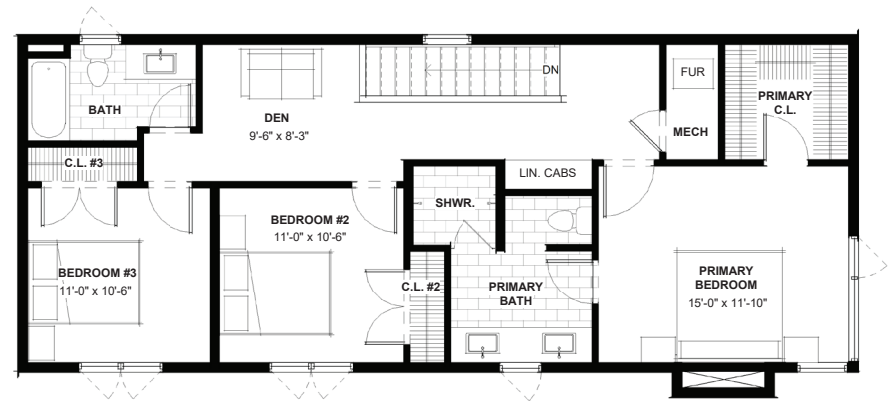
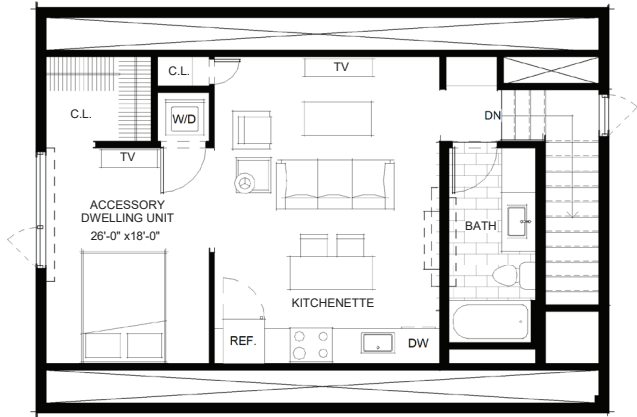


BACK ELEVATION

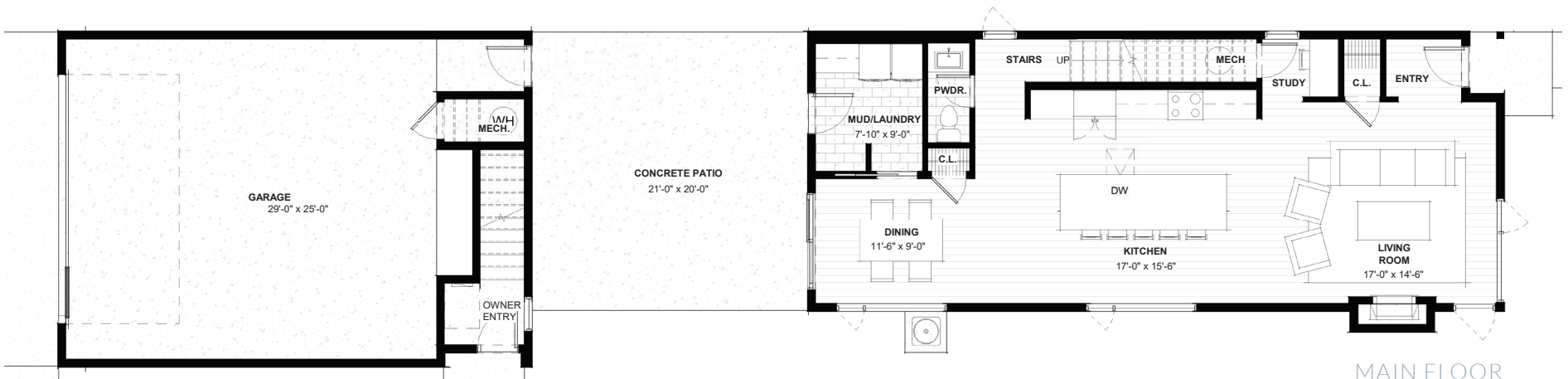
GranCieloBZN.com



GRAN CIELO



SECOND FLOOR



MAIN FLOOR

FIKA 2A-2

1,905 SF | 3 bedrooms | 2.5 bathrooms
 ADU | 600 SF, 1 bedroom, 1 bathroom

Please note actual floor plans and finishes may differ slightly when constructed.