



Actual exterior may change depending on specific building location

\lah-gome\ Swedish: Something done in just the right amount; in comfortable moderation and balance

LAGOM D-4a

- + 4 bed | 3.5 bath | 3,208 sqft
- + Open kitchen, dining, and living room
- + Flexible floor plan with a den + bonus 4th bedroom
- + Oversized 2nd garage bay
- + Mud room off of garage entry



FRONT ELEVATION

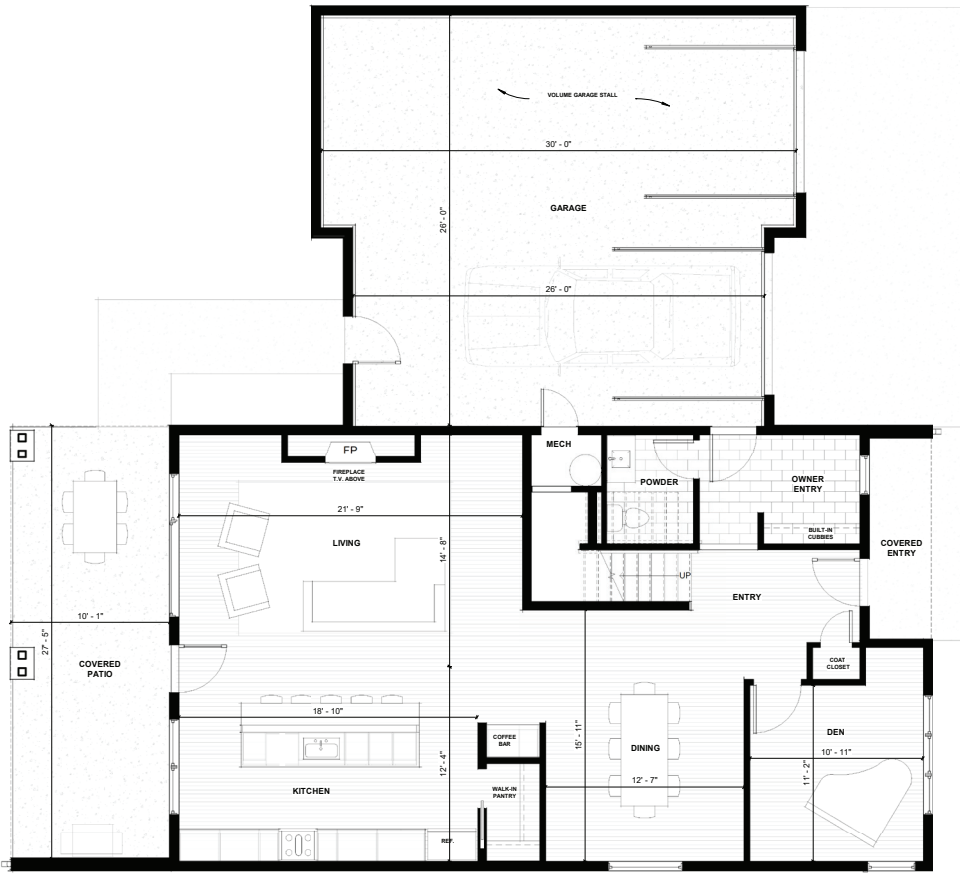


BACK ELEVATION

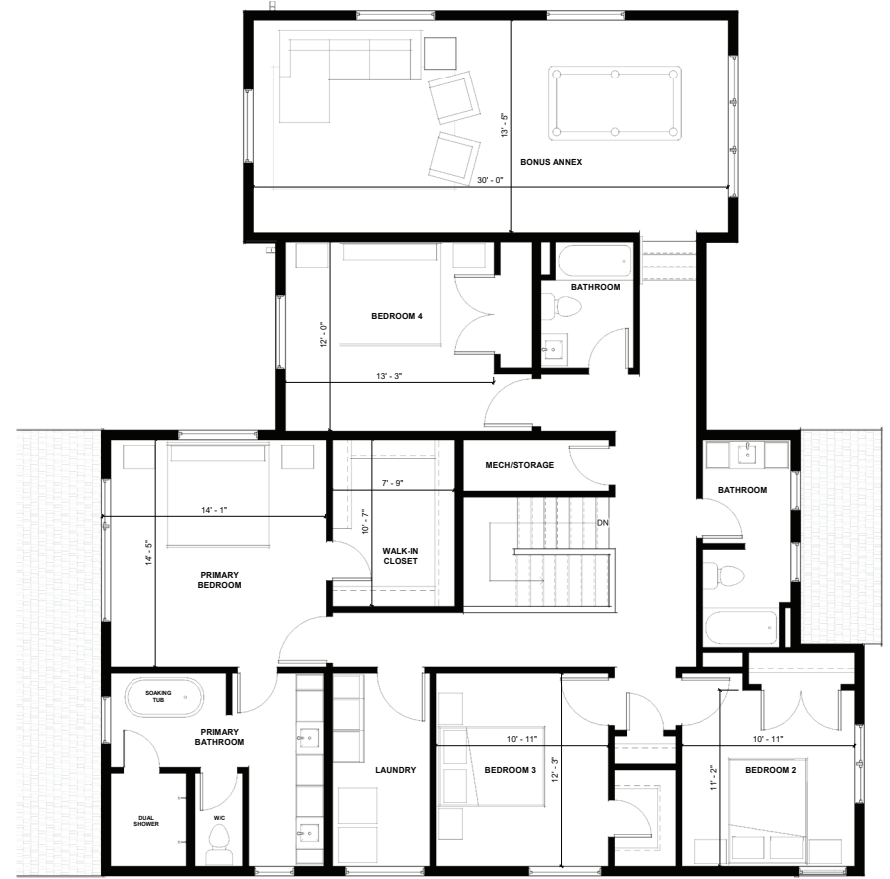
GranCieloBZN.com



GRAN CIELO



MAIN FLOOR



SECOND FLOOR

LAGOM D-4a

3,208 SF | 4 bedrooms | 3.5 bathrooms

Please note actual floor plans and finishes may differ slightly when constructed.