

Actual exterior may change depending on specific building location

\lah-gome\ Swedish: Something done in just the right amount; in comfortable moderation and balance

LAGOM N-2A

- + 3 bed | 2.5 bath | 2,194 sqft
- + Above garage ADU: 556 sqft, 1 bed, 1 bath
- + Contemporary kitchen with large island
- + Modern floor plan with first floor den



SIDE ELEVATION

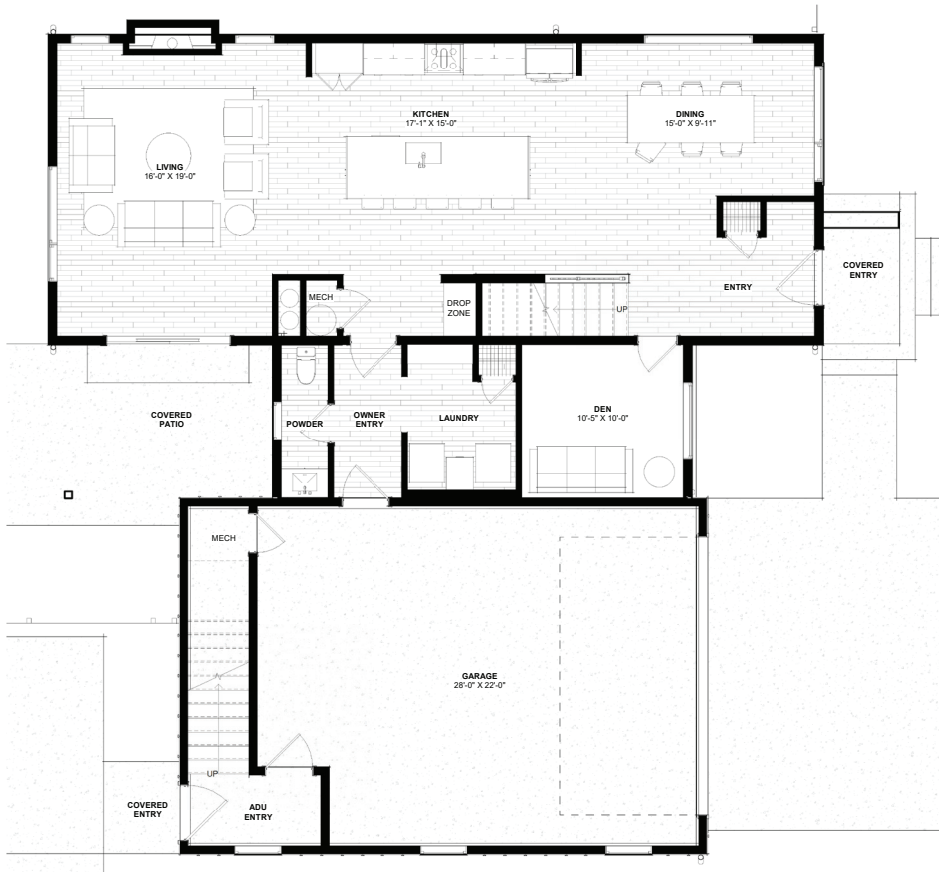


BACK ELEVATION

GranCieloBZN.com



GRAN CIELO



MAIN FLOOR



SECOND FLOOR

LAGOM N-2A

2,194 SF | 3 bedrooms | 2.5 bathrooms
 ADU | 566 SF, 1 bedroom, 1 bathroom