

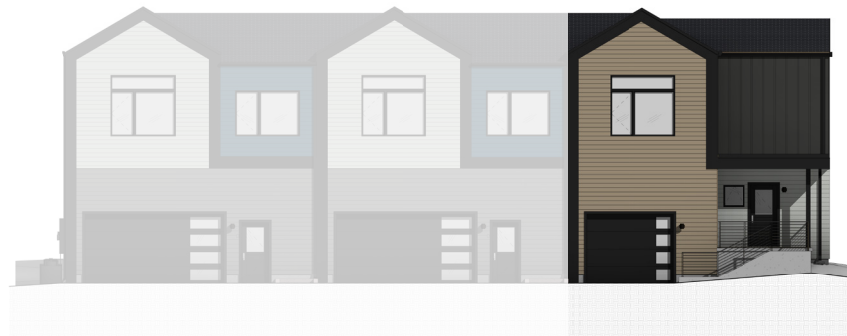


Actual exterior may change depending on specific building location

\kuhl\ Swedish/Danish: Fun,  
Nice, Enjoyable, Amusing.

## KUL 2

- + Covered front and rear patio
- + Modern Scandinavian design with quality materials throughout
- + 3 bedroom, 2.5 bathroom plan
- + Additional features include a large kitchen with seating bar

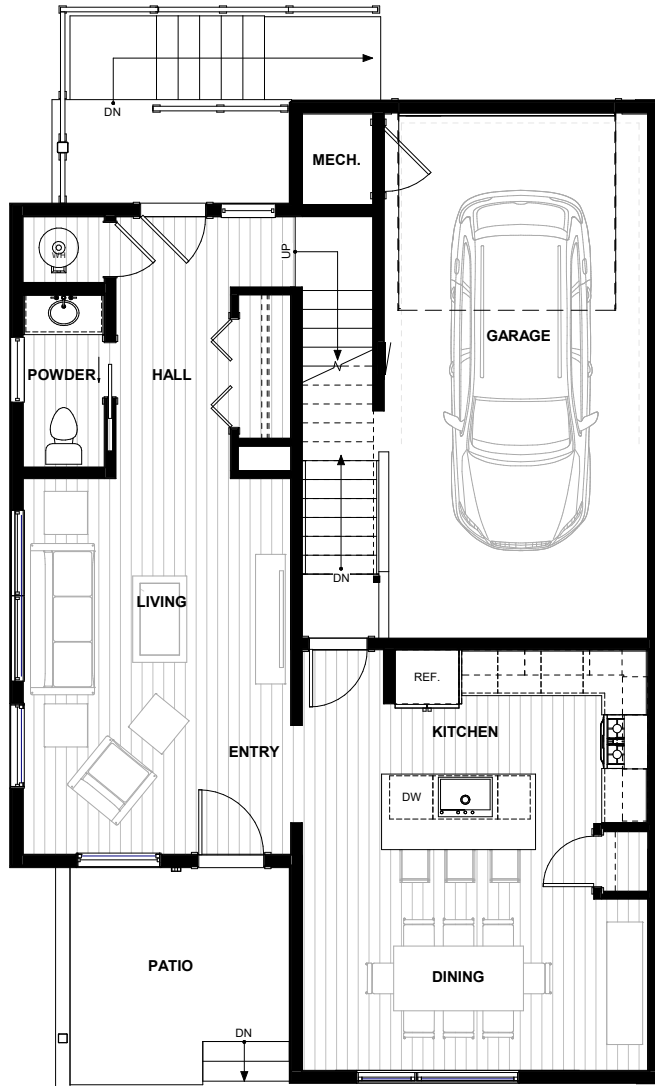


REAR ELEVATION

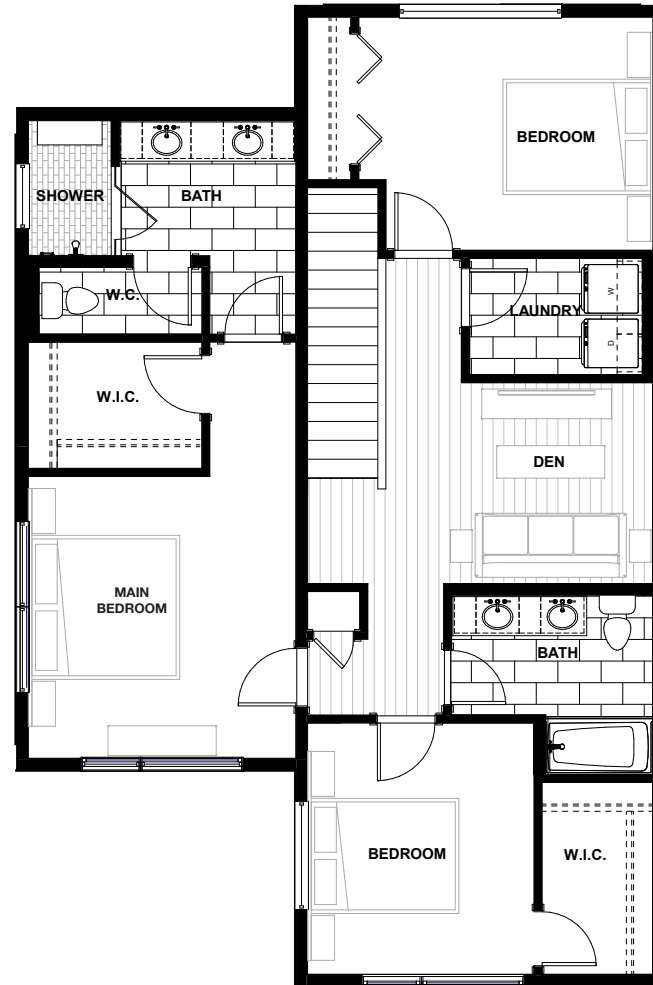
[GranCieloBZN.com](http://GranCieloBZN.com)



GRAN CIELO



MAIN FLOOR



SECOND FLOOR

## KUL 2

2,003 SF | 3 bed | 2.5 bathrooms

Please note actual floor plans and finishes may differ slightly when constructed.