



Actual exterior may change depending on specific building location

\lah-gome\ Swedish: Something
done in just the right amount;
in comfortable moderation
and balance

LAGOM P-1b

- + 4 bed | 3.5 bath | 3,076 sqft
- + Open floor plan with modern kitchen
- + Primary suite on first floor
- + Oversized windows and quality materials throughout
- + Large second floor bonus room



FRONT ELEVATION

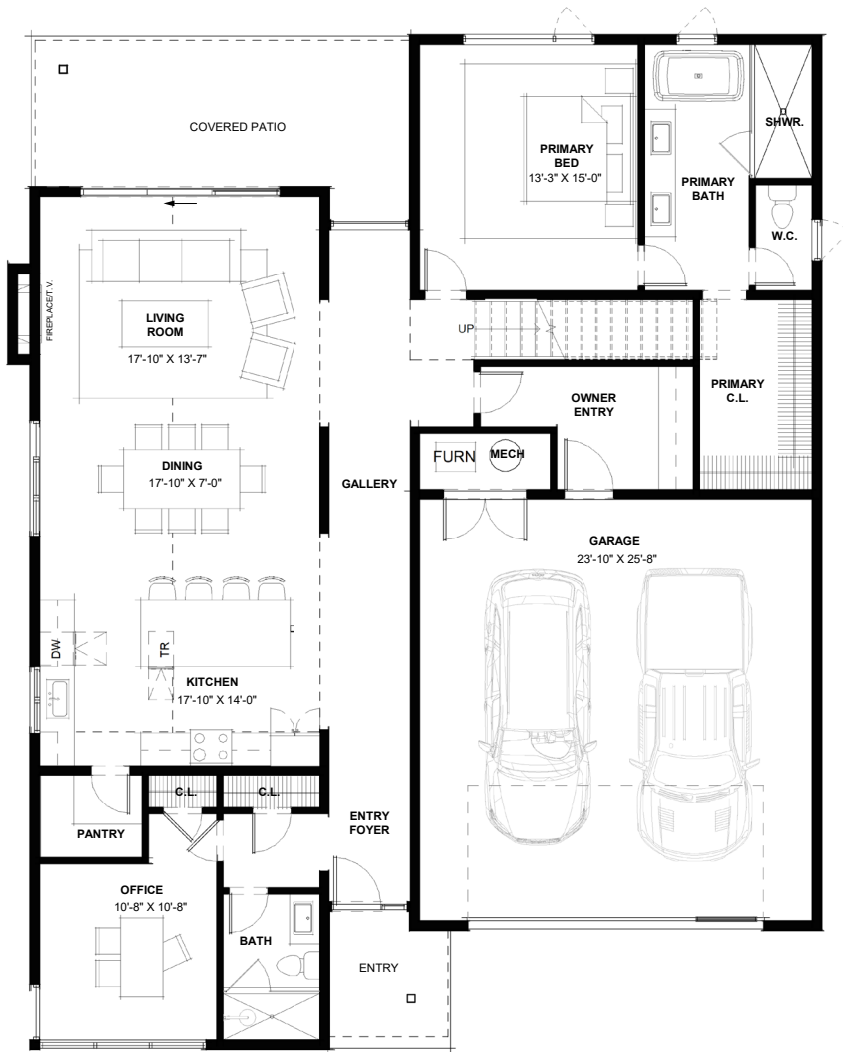


REAR ELEVATION

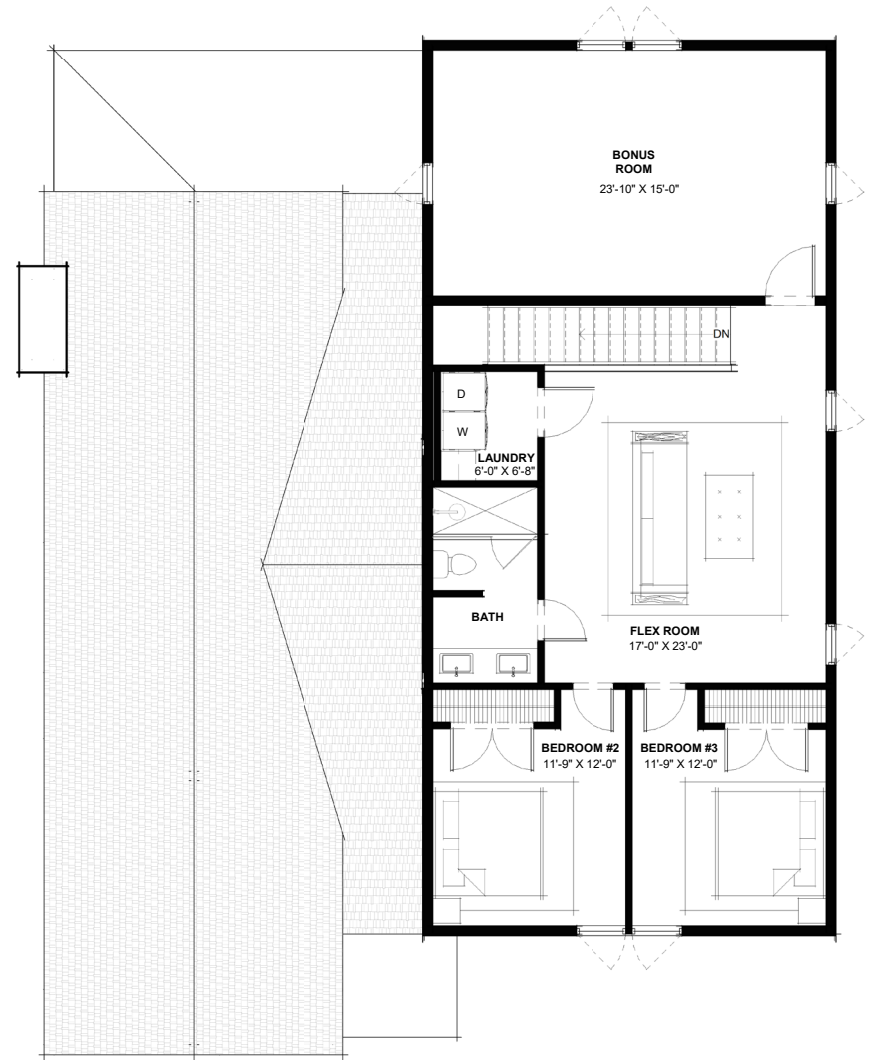
GranCieloBZN.com



GRAN CIELO



MAIN FLOOR



SECOND FLOOR

LAGOM P-1b

3,076 GSF | 4 bedrooms | 3 bathrooms

Please note actual floor plans and finishes may differ slightly when constructed.