

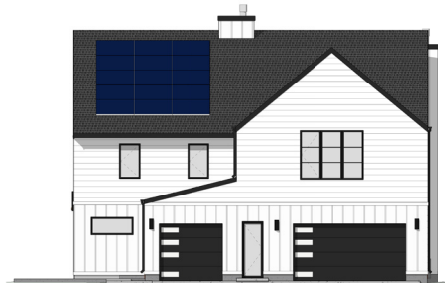


Actual exterior may change depending on specific building location

*\gla-deh\ Norwegian: To happily  
look forward to something.*

# GLEDE CP-2Aa

- +4 bed | 3.5 bath | 3,535 sqft
- + 1st floor primary suite
- + Spacious kitchen with large island and pantry
- + Laundry & mud room off of garage entry
- + 3 car garage w/ apartment above



REAR ELEVATION

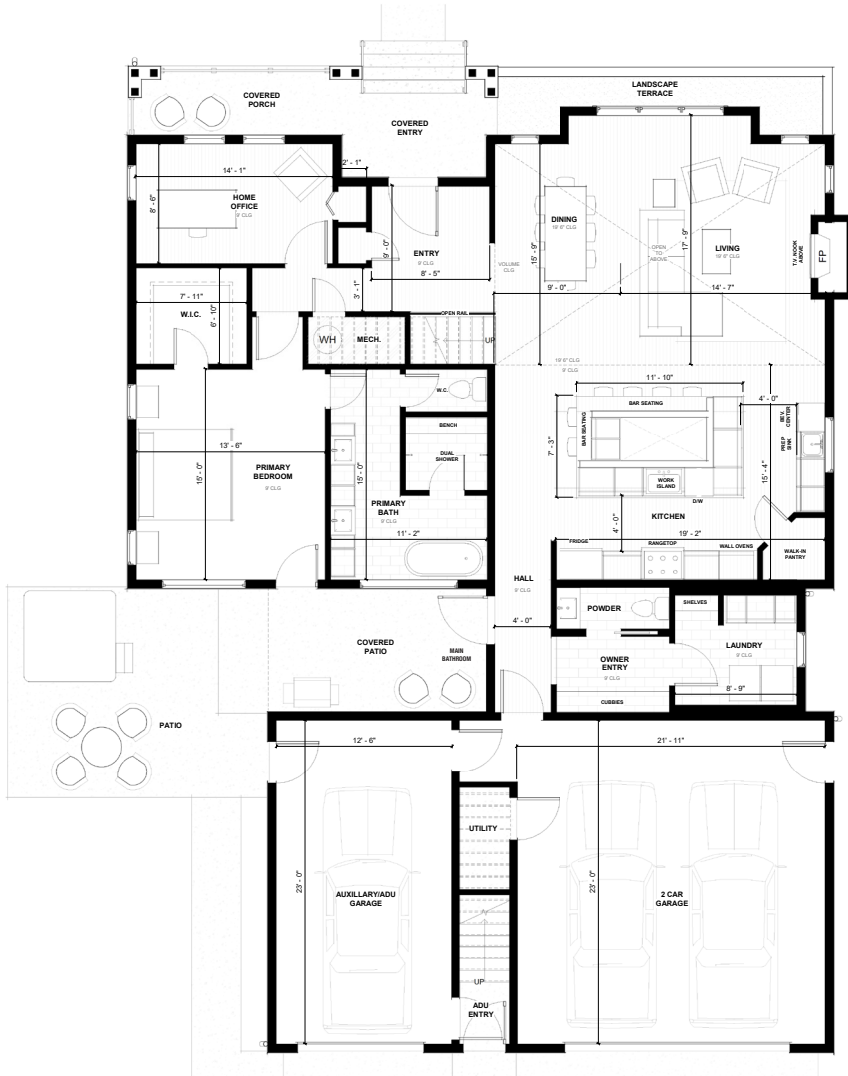


SIDE ELEVATION

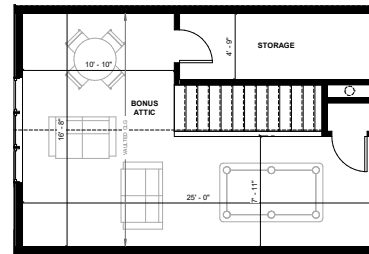
[GranCieloBZN.com](http://GranCieloBZN.com)



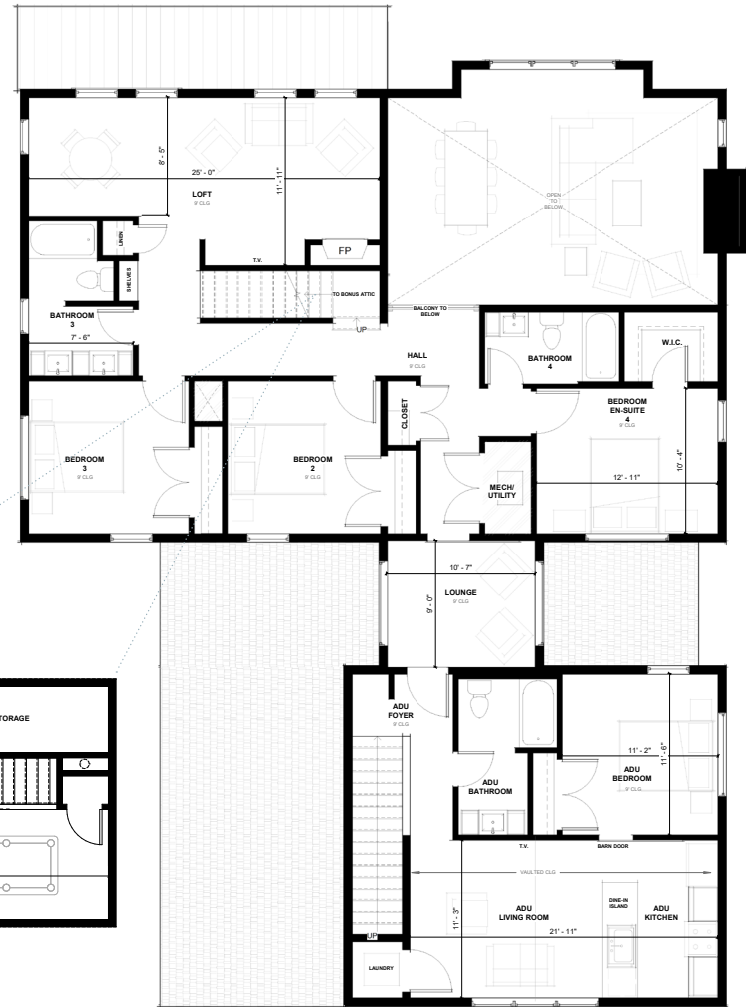
GRAN CIELO



MAIN FLOOR



THIRD FLOOR



SECOND FLOOR

## GLEDE CP-2Aa

3,535 GSF | 4 bedrooms | 3.5 bathrooms  
 ADU | 592 GSF, 1 bedroom 1 bathroom

Please note actual floor plans and finishes may differ slightly when constructed.