



Actual exterior may change depending on specific building location

\lah-gome\ Swedish: Something done in just the right amount; in comfortable moderation and balance

LAGOM D-1

- + 3 bed | 3 bath | 2,822 sqft
- + Open floor plan with modern functionality
- + Spacious kitchen and dining with walk-in pantry
- + Additional main floor den with bonus room and gym/flex room upstairs



FRONT ELEVATION

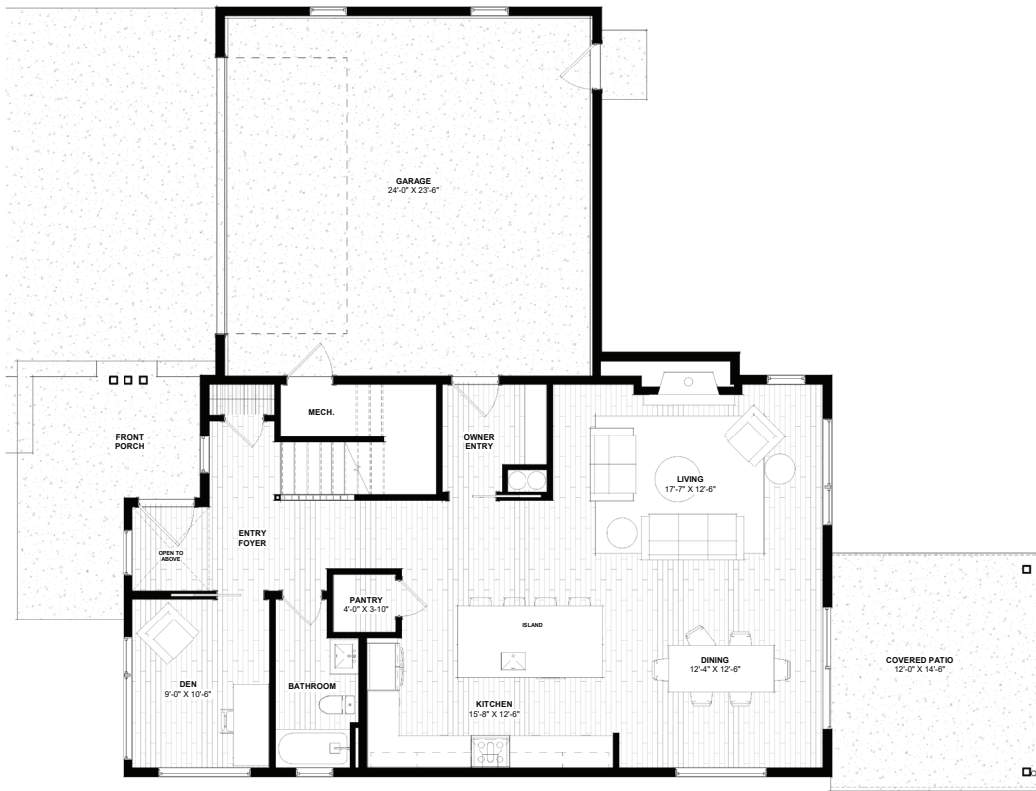


BACK ELEVATION

GranCieloBZN.com



GRAN CIELO



MAIN FLOOR



SECOND FLOOR

LAGOM D-1

2,822 SF | 3 bedrooms | 3 bathrooms