



Actual exterior may change depending on specific building location

*\gla-deh\ Norwegian: To happily  
look forward to something.*

# GLEDE CP-4

- + 3+ bedroom | 3.5 bath | 3,068 sqft
- + Flexible floor plan with den and large bonus room
- + Modern floor plan including large outdoor living space
- + Oversized windows and upgraded materials throughout
- + 3 car garage



SIDE ELEVATION

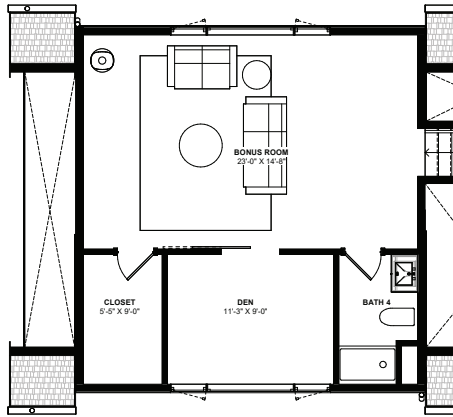


REAR ELEVATION

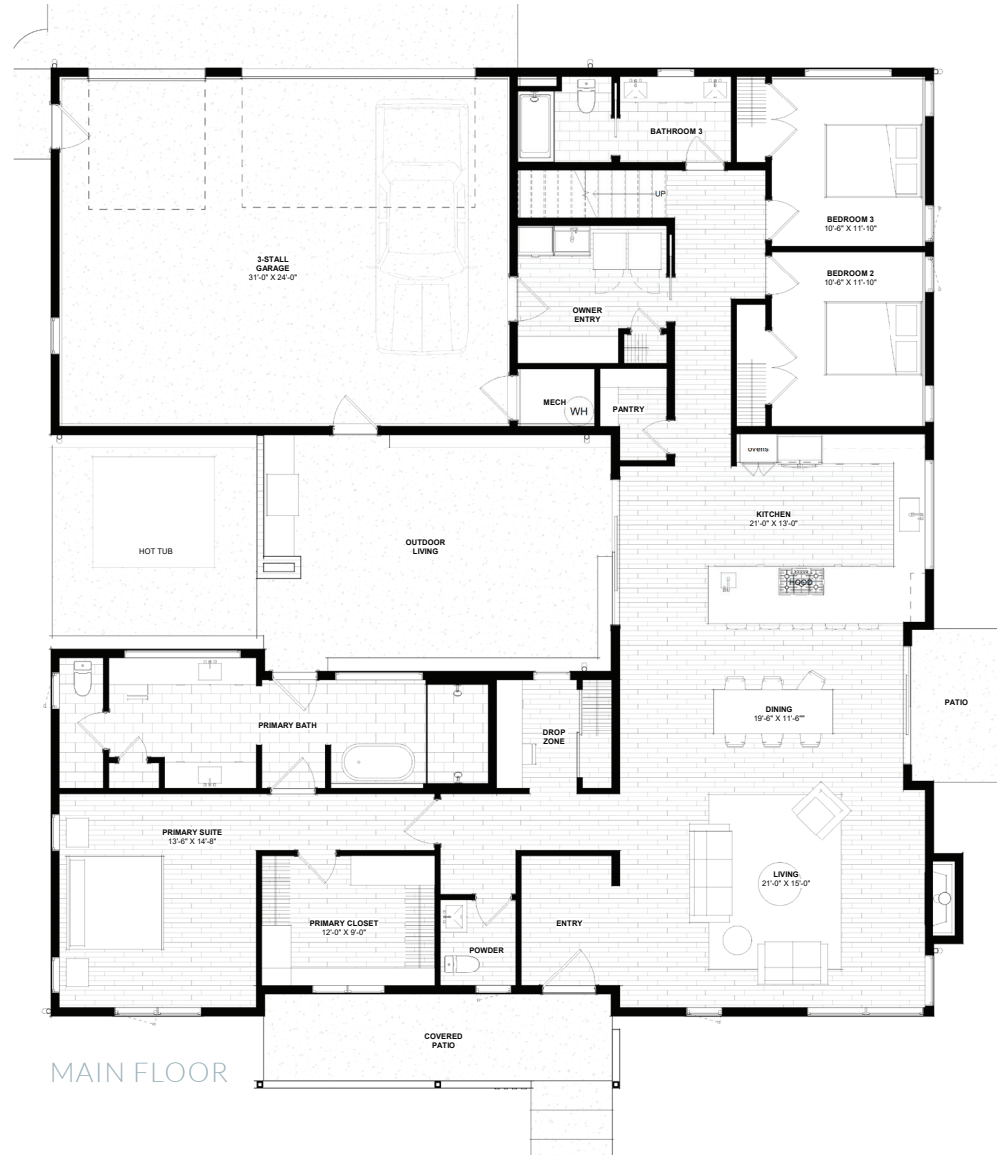
[GranCieloBZN.com](http://GranCieloBZN.com)



GRAN CIELO



SECOND FLOOR



MAIN FLOOR

## GLEDE CP-4

3,068 SF | 3+ bedrooms | 3.5 bathrooms