



Actual exterior may change depending on specific building location

\lah-gome\ Swedish: Something done in just the right amount; in comfortable moderation and balance

# LAGOM D-4a

- + 4+ bed | 3.5 bath | 3,325 sqft
- + Open kitchen, dining, and living room plan
- + Flexible plan with den and large bonus room
- + Oversized 2nd garage bay
- + Large windows and upgraded materials throughout



FRONT ELEVATION

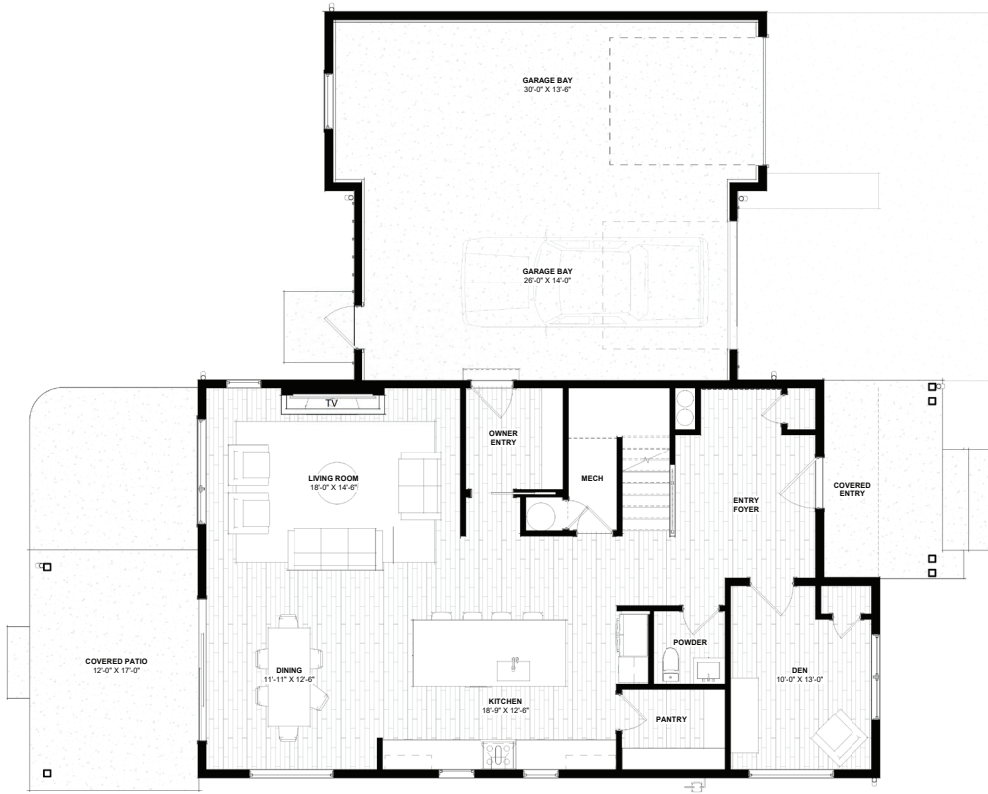


BACK ELEVATION

[GranCieloBZN.com](https://www.GranCieloBZN.com)



GRAN CIELO



MAIN FLOOR



SECOND FLOOR

**LAGOM D-4a**  
 3,325 SF | 4+ bedrooms | 3.5 bathrooms